



DMS on Northbound I-25

Overview: Implementation studies, design and specifications

Owner: Colorado Department of Transportation (CDOT)
City & County of Denver, Denver International Airport

Completion: 1998—Present

Intelligent Transportation Systems Design

Project Description

ITS devices are a suite of technologies proven quite effective in assisting transportation management agencies to maximize traffic flows along existing roadway networks. Among other functions, such devices and their operating subsystems can be used to: 1] identify traffic incidents; 2] determine current travel speeds and levels of congestion; 3] identify locations experiencing (or soon to experience) poor weather, roadway icing or other potentially hazardous conditions; 4] provide data for dissemination of pre-trip traveler information via web site or the media; 5] disseminate en-route traveler information via sign messaging or radio broadcast; and 6] exchange relevant road condition data with transportation, enforcement and emergency response partner agencies.

The staff of Centennial Engineering, Inc. (CEI) has provided ITS design services on behalf of cities including the City and County of Denver, the Colorado Department of Transportation,

and private entities including contractors and other consultants. These include a variety of devices for ITS data collection, incident detection and information dissemination such as:

- Dynamic Message Signs (DMS);
- Highway Advisory Radio (HAR);
- Road Weather Information Systems (RWIS) equipment;
- Closed Circuit Television (CCTV);
- Count and speed sampling stations using loops, radar, video and toll tag readers; and
- Wire-line and wireless communications facilities.

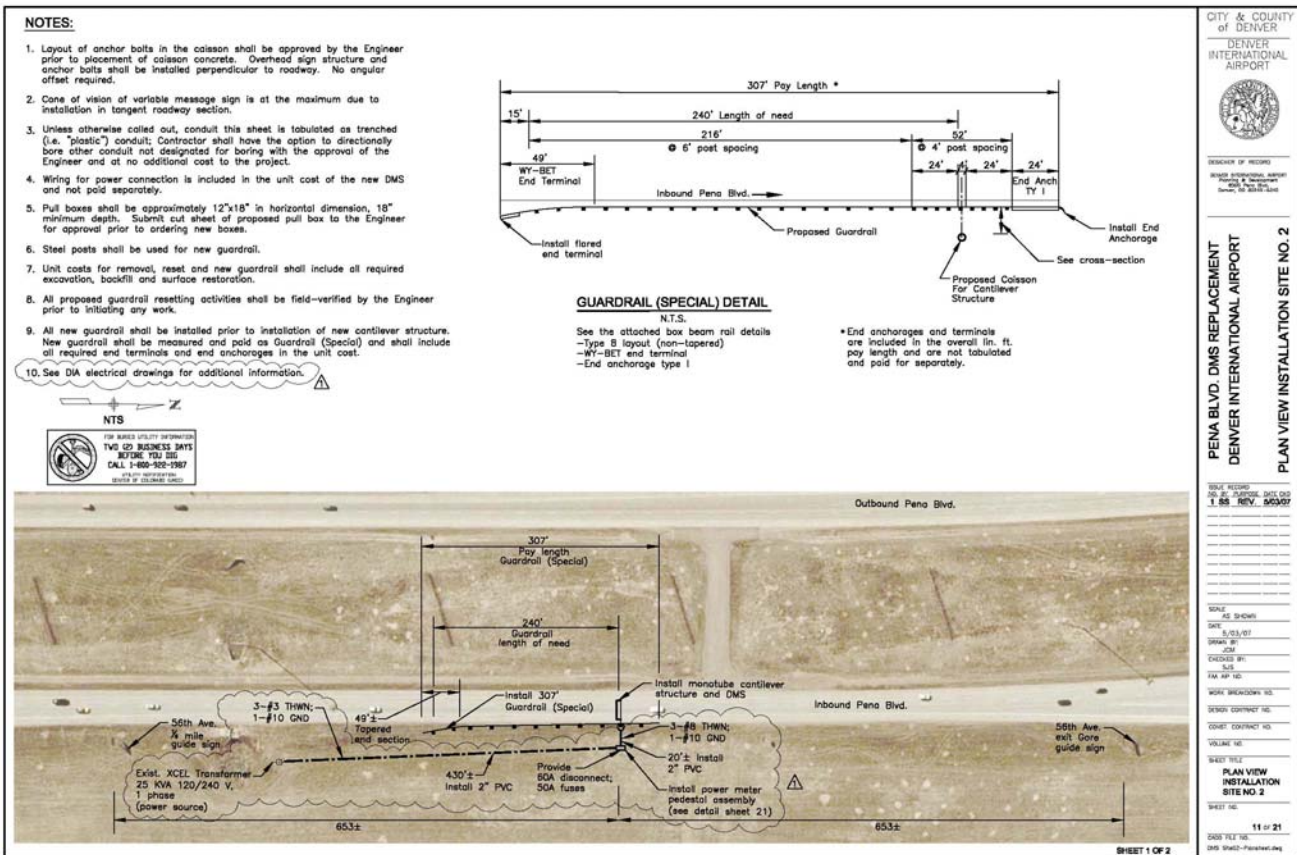
Centennial Vice President and Chief Traffic Engineer Steven J. Sabinash, P.E., has provided design services for deployment of ITS field devices across Colorado, including all of the device categories listed.



I-70 CCTV Image



I-70 Closure "Blizzard of 2003"



Denver International Airport DMS Plan

SERVICES

Structural Engineering & Design
Roadway Design
Construction Engineering
Traffic Engineering
Intelligent Transportation Systems (ITS)
Surveys & Right-of-Way
Information Technology Systems

CONTACTS

Denver Area:
Steve Sabinash, PE
5420 Ward Road, Suite 125
Arvada, CO 80002
720-279-7250
ssabinash@cei02.com

Western Slope:
Michael Fowler, PE
P.O. Box 3374
Glenwood Springs, CO 81601
970-618-4047
mfowler@cei02.com

www.cei02.com