

Overview:

Vendette Crossing: 3-Span, Variable Depth Steel Plate Girder & Composite Deck

Edwin's Crossing: Single Span, Horizontally Curved, Steel Rolled Girder & Composite Concrete Deck

Everist Crossing: Single Span, Steel Rolled Girder & Composite Concrete Deck.

Owner: Town of Silverthorne, CO

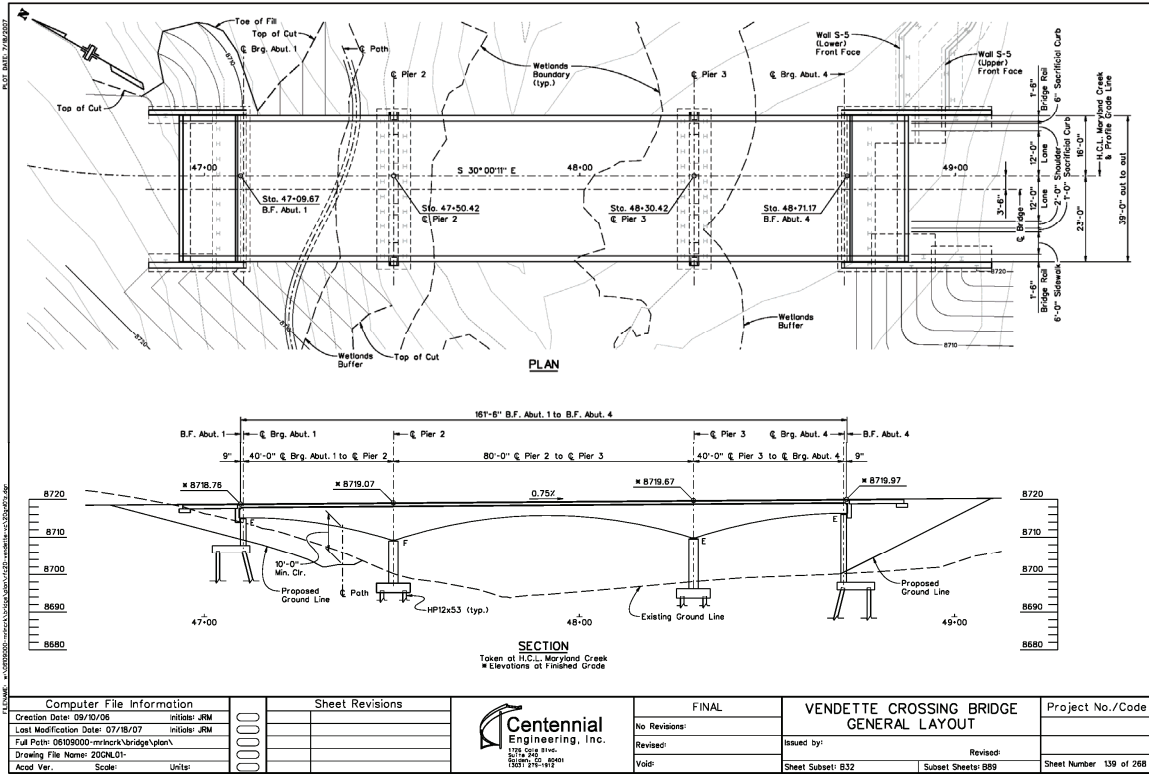
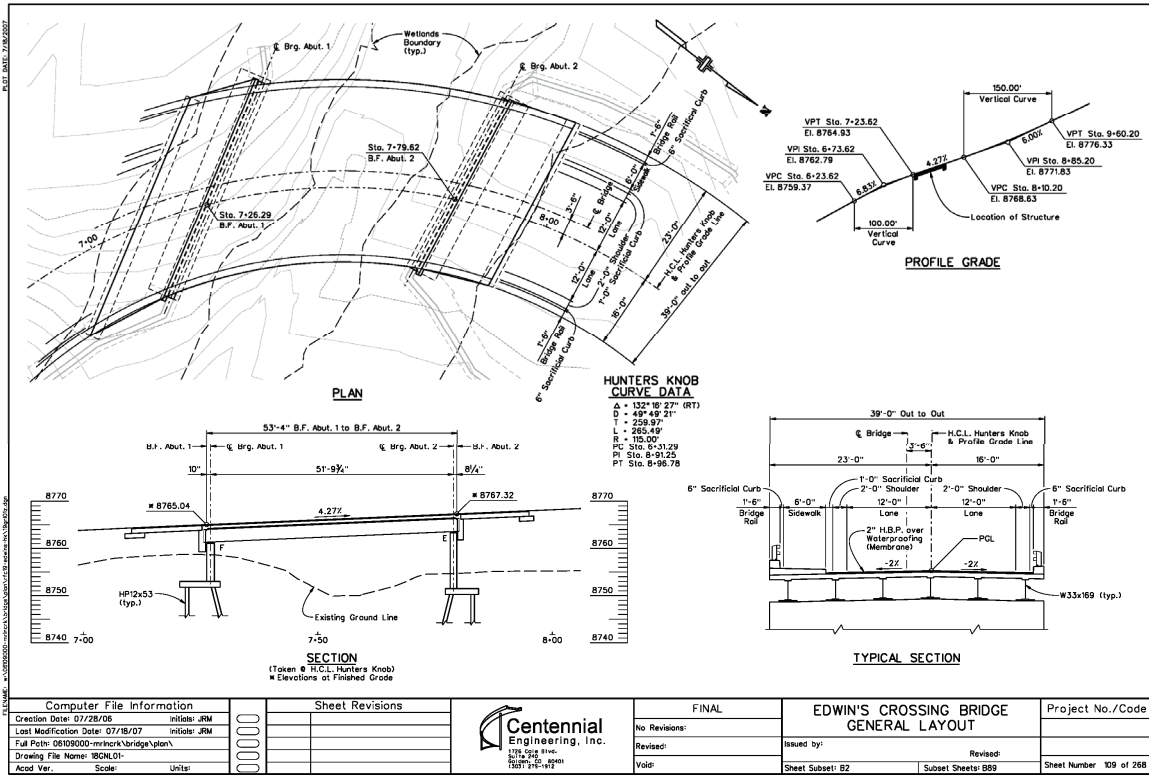
Completion: 2008 (Projected)

South Maryland Creek Ranch Bridges

Project Description

South Maryland Creek Ranch is a high visibility, 300-acre residential development intended for annexation into the Town of Silverthorne, CO. The project is located on Highway 9, slightly north of the town, and includes three new bridges, several miles of roads, a 20-acre town park, a private lake and a nature preserve. Centennial is the engineer of record for all the project's civil structures. Our scope of work includes bridge design, retaining wall design and shop drawing review. Our construction management role for the project includes inspection for pile driving, structural backfill, formwork, reinforcing steel and concrete placement.

Key coordination issues involve a steady conveyance of structural requirements to the architect and owner to keep the project on track. The bridges for this project are designed with uncoated weathering steel for long term low maintenance in a mountain environment. CEI was again teamed with prime contractor Stan Miller, Inc. and bridge contractor Colorado Constructors, Inc. for the structures on this project. The project team met the 2007 goal to have the concrete deck placement complete for all bridges.



SERVICES **CONTACTS**

Structural Engineering & Design
 Roadway Design
 Construction Engineering
 Traffic Engineering
 Intelligent Transportation Systems (ITS)
 Surveys & Right-of-Way
 Information Technology Systems

Denver Area:
 Mark Post, PE
 5420 Ward Road, Suite 125
 Arvada, CO 80002
 720-279-7250
mpost@cei02.com

Western Slope:
 Michael Fowler, PE
 715 Grand Avenue
 Glenwood Springs, CO 81601
 970-947-8995
mfowler@cei02.com

www.cei02.com