



**Overview:** 3-Span, Steel Rolled Girder & Composite Concrete Deck with Steel Truss Facade

**Owner:** Town of Breckenridge, CO

**Completion:** 2005

## Skyway Skiway over Ski Hill Road

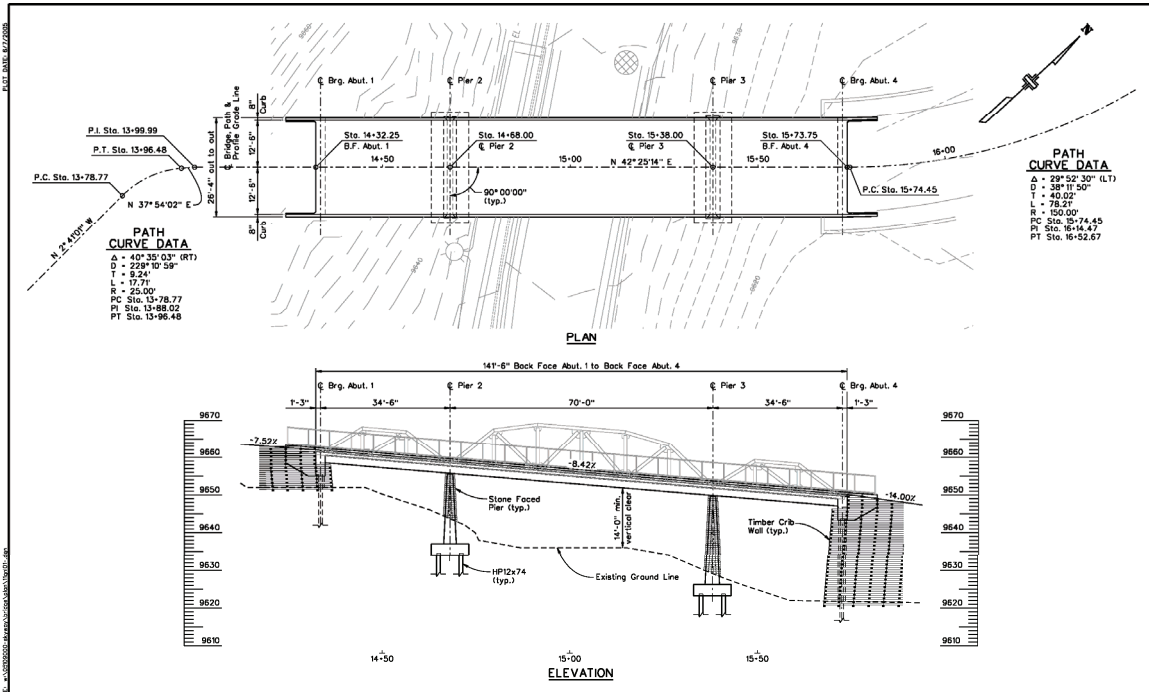
### Project Description

Working with Stan Miller, Inc. (SMI), Colorado Constructors, Inc. (CCI), and Big R Manufacturing (Big R), CEI brought value engineering to a Vail Resorts project that was over budget and behind schedule in the spring of 2005. CEI was asked to step in and take over design of structural elements for this high visibility project in Breckenridge, Colorado. Initial estimates predicted costs of 40% over budget when CEI began work. Work at 9500 feet had to be complete before weather conditions were expected to deteriorate by late fall. By working with Vail Resorts and SMI, CEI streamlined an undercrossing of a CDOT ROW (Park Ave), eliminated a girder from the Ski Hill Road bridge design, and engineered cribwall structures for retaining walls thereby reducing the need for costly facing components and streamlining the construction process. CEI worked closely with CCI and Big R to fast track the steel fabrication for steel structural elements. Our designs and ability to work closely with our client and their contractor

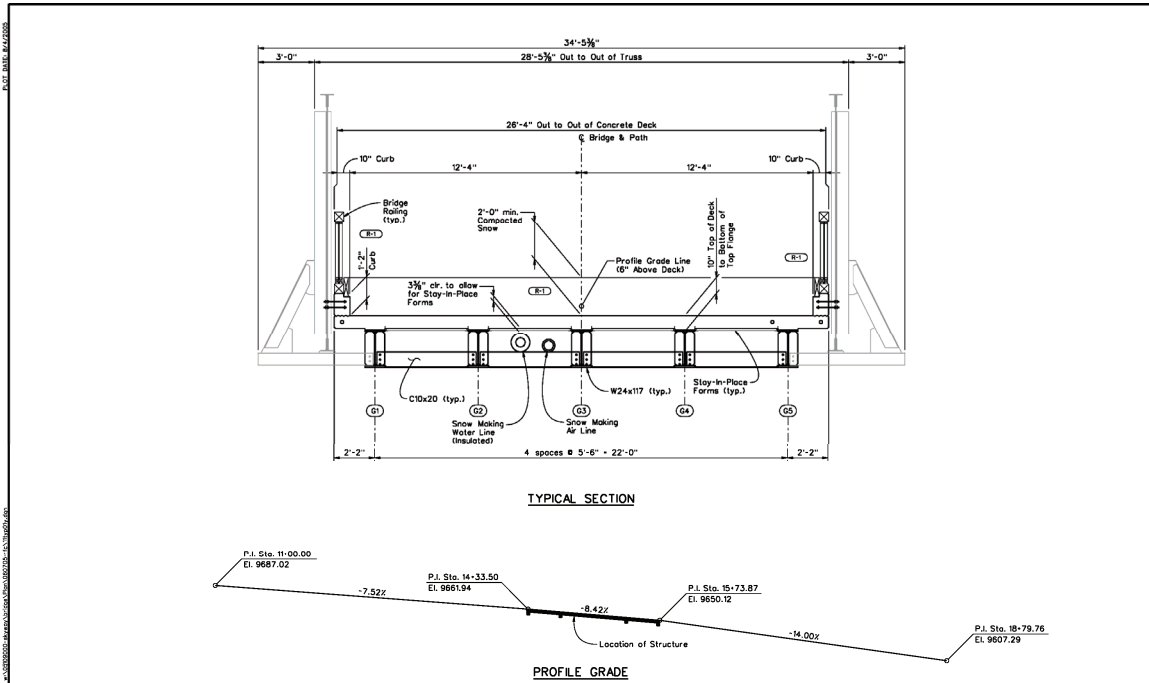
helped this project open a year ahead of schedule and within budget in December 2005. This project was a team success for all participants.

*"The Skyway Skiway is an example of the ski resort and the town working together to better meet the needs of our guests, including easier access from the mountain to the parking lots and Main Street," said Roger McCarthy, chief operating officer for Breckenridge and Keystone. – Summit Daily News*

*Breckenridge Ski Resort in Colorado celebrated the opening of the Skyway Skiway a year early on Friday, December 23rd, with a ribbon cutting on the skier bridge that serves as a link for Breckenridge skiers and riders from Peak 8 to the Main Street Breckenridge and free skier parking lots. The Skyway Skiway also will provide ski-in access to the Mountain Thunder Lodge and Townhomes. – Daily Snow News*



Computer File Information		Sheet Revisions			FINAL	SKYWAY SKIWAY BRIDGE GENERAL LAYOUT	Project No./Code
Creation Date: 05/16/05	Initials: uRM				No Revisions:		Issued by:
Last Modification Date: 05/08/05	Initials: uRM			Revised:	Sheet Subst:	Subst Sheets:	Sheet Number: B2
Full Path: O:\050000-SKYWAY BRIDGE\PLAN				Void:			



Computer File Information		Sheet Revisions			FINAL	SKYWAY SKIWAY BRIDGE TYPICAL SECTION	Project No./Code
Creation Date: 05/17/05	Initials: uRM	08-03	Remove Curb & Deck Forms, Remove Gravel		No Revisions:		Issued by:
Last Modification Date: 08/04/05	Initials: uRM			Revised:	Sheet Subst:	Subst Sheets:	Sheet Number: B3
Full Path: O:\050000-SKYWAY BRIDGE\PLAN				Void:			

## SERVICES

- Structural Engineering & Design
- Roadway Design
- Construction Engineering
- Traffic Engineering
- Intelligent Transportation Systems (ITS)
- Surveys & Right-of-Way
- Information Technology Systems

## CONTACTS

- Denver Area:**  
 Mark Post, PE  
 5420 Ward Road, Suite 125  
 Arvada, CO 80002  
 720-279-7250  
[mpost@cei02.com](mailto:mpost@cei02.com)
- Western Slope:**  
 Michael Fowler, PE  
 715 Grand Avenue  
 Glenwood Springs, CO 81601  
 970-947-8995  
[mfowler@cei02.com](mailto:mfowler@cei02.com)