



Overview: Single Span, Side-by-Side
Prestressed Concrete Slab Girders

Owner: Adam's Rib, Eagle, CO

Completion: 2005

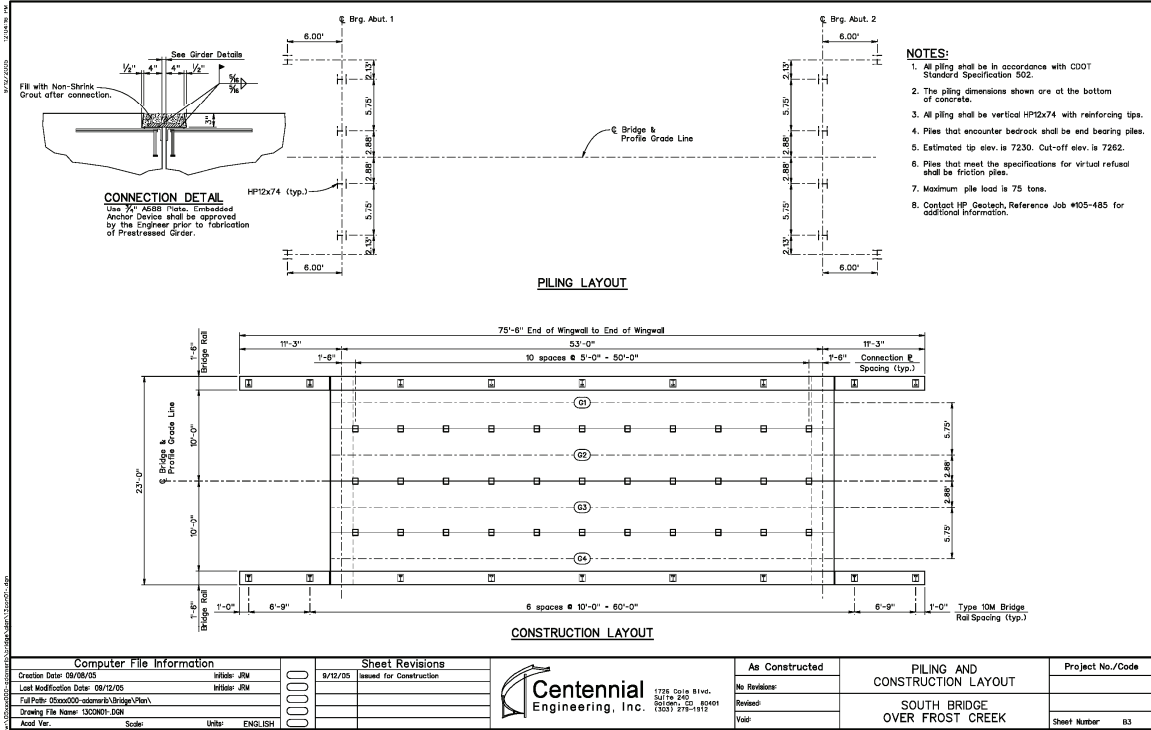
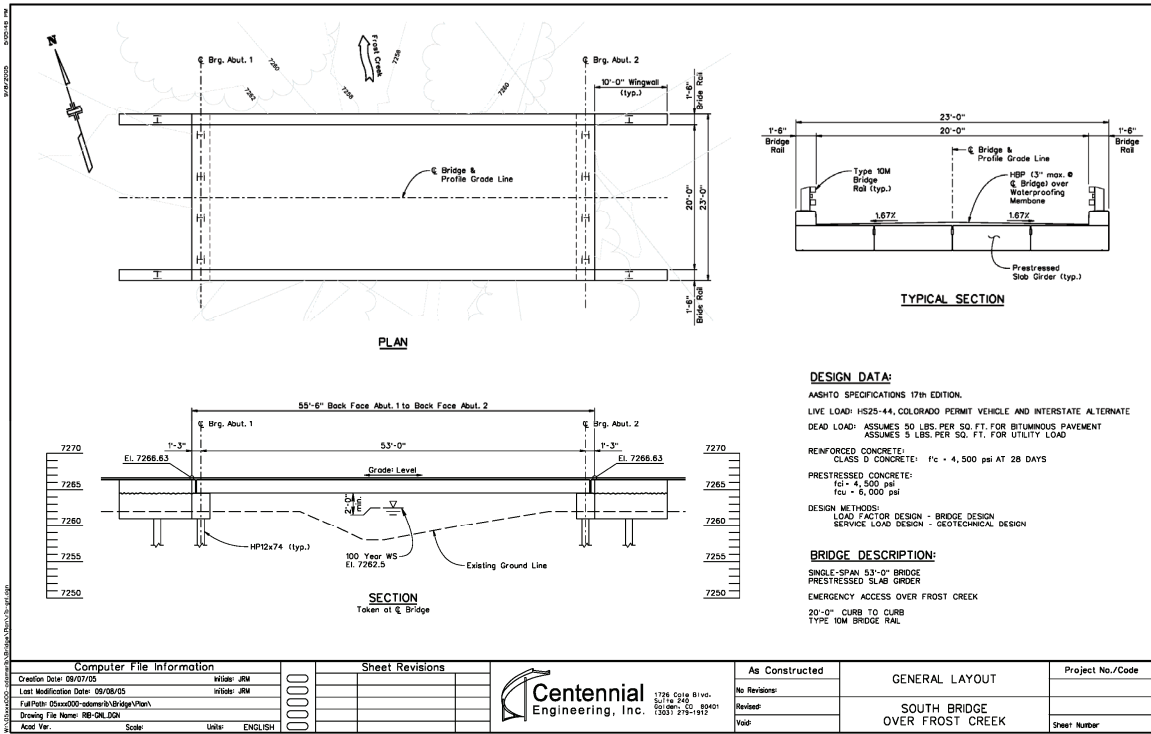
South Bridge over Frost Creek

Project Description

The South Bridge over Frost Creek is an example of Centennial's ability to work closely with a client to meet their specific needs for a minimum structure in a minimum amount of time for design and construction. Centennial was asked by Adam's Rib / Kummer Development to design an emergency vehicle crossing of Frost Creek for an alternate access to a planned residential development. Working with Rocky Mountain Pre-stressed (RMP) and Colorado Constructors, Inc. (CCI), CEI produced bridge plans, specifications and calculations for Eagle County. In less than 2 weeks from notice-to-proceed, girder fabrication was underway. This project demonstrates CEI's ability to adjust our level of effort in order to meet our client's schedule critical path. It is a perfect example of our bridge design efficiency and effectiveness when working under compressed schedules and budgets.

Close coordination with the bridge contractor, CCI was also key to the success of the project. Side-by-side precast prestressed slab girders on simple cast-in-place, steel pile supported abutment seats provided the opportunity to shorten the construction duration and to minimize the amount of concrete delivered to the site.

By tailoring the design to the needs of the client, the strengths of the contractor and the constraints of the site, the bridge design and construction total project duration was trimmed to approximately four months.



SERVICES

Structural Engineering & Design
 Roadway Design
 Construction Engineering
 Traffic Engineering
 Intelligent Transportation Systems (ITS)
 Surveys & Right-of-Way
 Information Technology Systems

CONTACTS

Denver Area:
 Mark Post, PE
 5420 Ward Road, Suite 125
 Arvada, CO 80002
 720-279-7250
mpost@cei02.com

Western Slope:
 Michael Fowler, PE
 715 Grand Avenue
 Glenwood Springs, CO 81601
 970-947-8995
mfowler@cei02.com